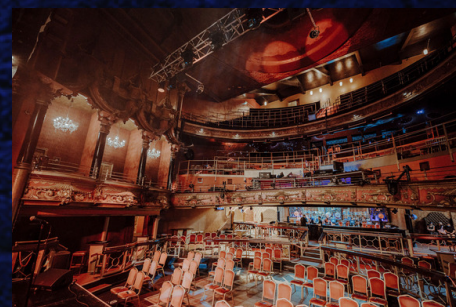


★ CLAPHAM ★ GRAND

A PALACE OF MODERN VARIETY

PRIVATE HIRE

INFO@CLAPHAMGRAND.COM / 020 7223 6523





★ CLAPHAM ★ GRAND

A PALACE OF MODERN VARIETY

ABOUT THE GRAND

page 2

LIVE SHOWS

page 6

PHYSICALLY-DISTANCED

page 7

LOCATION HIRE

page 9

STREAMING

page 10

PRIVATE HIRE

page 13

TECH & FURNITURE

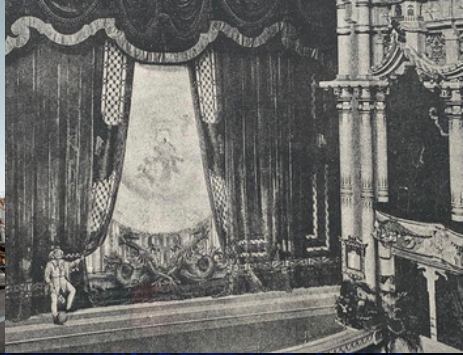
page 15

FOOD & DRINK

page 18

KEY FACTS

Main Room: 12000ft² (1115m²)
40 metre² screen
Licensed until 3am



ABOUT THE GRAND

121 YEARS OF ENTERTAINING

The Grand was established in 1900 by some of the most popular performers of the time. Launched at the height of the Music Hall, since then a cinema, a bingo hall and a nightclub, The Grand has always remained true to its original aim: to entertain.

A Palace of Varieties. This was what the residents of Clapham and Battersea were promised when the New Grand Theatre opened its doors for the first time on 26 November 1900. The first evening set expectations. Alongside musicians and comedians, the audience witnessed a family of acrobats, an ensemble of performing ponies, and a man better known for juggling banjos than for playing them.

The New Grand Theatre quickly established itself as one of London's premier venues, attracting the stars of its day. Favourite performers included the scandalous Marie Lloyd and the diminutive Little Tich dancing in oversized clown boots. Even a young Charlie Chaplin graced our stage.

As future heroes like Chaplin moved to Hollywood, the Grand Theatre, as it became known in 1927, followed the trend, setting up a screen alongside the stage. By 1931 the venue was a full-time cinema. What could you have seen on the very first night? Laurel & Hardy chasing a stray goat.

In the '60s Londoners began to prefer their colour televisions to their cinemas, and what had become the Essoldo Cinema was transformed into the Essoldo Bingo Club. For sixteen years the people of Clapham and Battersea had a dedicated bingo hall until the building closed in 1979. But not before our fine building was Grade II listed in 1978 – saving it from becoming a Wetherspoon's in the '90s.

The Grand reopened in 1991, having been restored to its former glory by promoters Mean Fiddler. Soon The Grand was a venue for bands about to break into the mainstream. Jay Kay lead Jamiroquai through their earliest hits. Courtney Love cracked jokes at her polite London crowd. And the Verve, fresh from trashing the US, brought the riot back to home turf. Even bigger acts followed in the '00s when Oasis, Muse and Brian May played to packed crowds.

In recent years The Grand has revived its original mission: the perfect blend of variety and quality. With themed film screenings or an irreverent take on bingo one night, and world-class comedians, musicians and DJs the next, we're reinventing the best of the past for new audiences

We encourage all parties, big and small, to enquire about their hiring needs - shows, talks, filming, photoshoots, streamed events, parties, award shows, and more!

We look forward to seeing as many of you as possible in our 'Palace of Variety'!









LIVE SHOWS

The Grand is famous for hosting a huge variety of world-class entertainment since it was founded in 1900, with Charlie Chaplin and Morecombe & Wise learning their trade here. Recent years have seen live concerts from Oasis, George Ezra, Snow Patrol, Muse & Courtney Love, drag superstars Sasha Velour, Bianca Del Rio, cabaret queens Myra Dubois and Diane Chorley and the cream of the comedy circuit Russel Howard, Jimmy Carr, Daniel Sloss, Al Murray & Jayde Adams.

We have also blazed a trail for the desire for more immersive nightlife, with Secret Cinema, Bongo's Bingo, Sounds Familiar & Guilty Pleasures all hosting residencies here. London's leading choirs & orchestra's, Some Voices, London Gay Men's Chorus and Basement Orchestra all frequently performing spellbinding sets with us, we are a leading ally to the LGBTQ community with Sink The Pink, Klub Kids and Pride In London all throwing parties with us, alongside the more quirky side of our programming giving us the chance to host high profile Boxing matches, Q&A's, Awards Shows and Exhibitions. Our in-house production resources providing second to none faculties for hosting all manner of events, alongside confetti. Lots and lots of confetti!

We require a 50% deposit to confirm any type of show, with the rest of the hire fee settled no later than 14 days before the event.

HIRE FEES

Hire Deals start from £2000+VAT

Standard agreement includes:

Full Tech Production Kit, 2 x Technical staff,
Ticketing and FOH Staff.

TICKETING

We work with DICE as our main ticketing provider. All events require at least a 40% allocation to the Venue. You will receive full online access to the sales so you can view them at anytime.

CAPACITY

Full - 1250 pax.

a mix of standing & seated. best for club nights, live music and party-like events.

Fully Seated - 700 pax.

*Stalls; 278. Circle: 222. Upper: 200
best for comedy, variety and cabaret.*

PHYSICALLY-DISTANCED

In August 2020, The Grand ran a pilot show with HM Government to demonstrate the possibilities of performances with a socially-distanced audience, during the Covid-19 pandemic. We were highly commended for our operation and have been fortunate enough to run 70+ successful shows during the times where venues could open.

We have imposed a new on-way system, contactless service methods, temperature checks and more to make sure your event as safe as possible. We have designed a variety of seating arrangements to sort all styles of events so they can operate safely and efficiently with a physically-distanced audience. Please ask for more information upon your enquiry.

We require a 50% deposit to confirm any type of show, with the rest of the hire fee settled no later than 14 days before the event.

AT YOUR SEAT SERVICE

To prevent busy queues, we have an app that is easy to download and order food, drink and merchandise directly to your seat!

TICKETING

To ensure the safety and efficiency of the distanced seating plans, the Venue requires 100% of the ticket allocation, to manage, for distanced shows.

HIRE FEES

Hire Deals start from
£1250+VAT

Standard Agreement Includes:

Full Tech Production Kit, 2 x Technical staff, Ticketing and FOH Staff.

DISTANCED CAPACITY

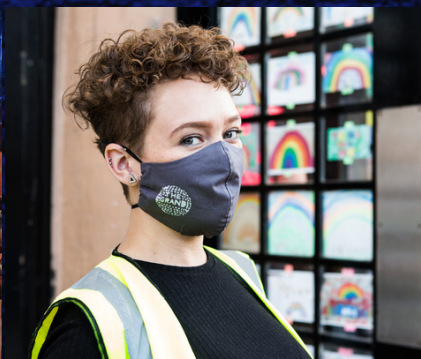
Socially-distanced shows for
up to 378 pax.

A mix of tables for 4 and pairs.

Stalls - Up to 140

Circle/Boxes - Up to 138

Upper - 100

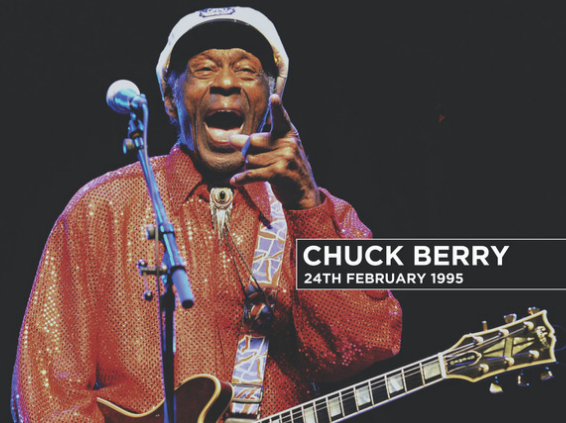




CHARLIE CHAPLIN
AUGUST 1901



OASIS
22ND MAY 2005



CHUCK BERRY
24TH FEBRUARY 1995



BRIAN MAY
25TH MAY 2011



SINK THE PINK
NYE 2016



RAG'N'BONE MAN
14 FEBRUARY 2017



COURTNEY LOVE
15TH JULY 1993

LOCATION HIRE

The Grand is the perfect venue for your location hire needs! We have worked with the likes of Netflix, BBC, ITV, Channel 4, Amazon Prime, Comedy Central and other major programming channels as well as independent film productions, music videos and photoshoots!

We are able to offer the use of the entire auditorium and backstage for most enquiries with a flexible calendar. Most recently we have hosted streaming concerts (Radio X, Nothing But Thieves), media projects with Marie Claire (Save The Arts campaign) and Series 2 of Feel Good (Netflix/All 4) starring Mae Martin, Charlotte Richie, Lisa Kudow and Sophie Thompson!

All of these projects were successfully filmed with Covid-19 safety precautions adhered to.

Standard agreements come with the use of our full production kit (if needed) and a member of our tech team to assist where needed.

Hourly Rates start from £300+VAT

Day Rates start from £2000+VAT

**You can find our almighty Tech Bible by visiting our website -
www.claphamgrand.com/private-hire**



STREAMING EVENTS

With the increasing demand for online shows and alternative live events, we've added incredible AV and streaming facilities to our existing outstanding sound, light and production specs!

Our multi-level venue offers a huge diversity of camera angles & shots, combined with a theatre size stage featuring a retractable cinema screen, offers a vast array of possibilities to create stand out streams

STANDARD INHOUSE STREAMING PACKAGE

£200 & VAT per camera operative *

£250 & VAT producer *

£1000 & VAT equipment hire (as per spec) **

Additional Venue Costs Apply dependant on hire duration - please ask.

*All staff quotes for 10 hour days, £25 PH additional hours.

** Extra equipment available to hire on request

VIDEO AND STREAMING

CAMERAS:

2 x Blackmagic Design 4k

LENSES:

Olympus 40-150mm f.28 pro (main shot)

Panasonic 12-35mm f.28 (roaming work)

Sigma 56mm f.14 (close in fixed)

ACCESSORIES:

Professional Gimbal Kit

Hollyland Mars Pro 400s System

2 x Tripods

VISION MIXER:

Blackmagic Design ATEM Mini Pro

Custom Dedicated PC







Dressing Rooms

We have four dressing rooms and a production office backstage, across two levels, with two sets of toilets.



PRIVATE HIRE

The Grand has hosted many private events in its time. From award shows, receptions, weddings, birthdays and corporate away-days. We are able to supply tech, food, drink, and even entertainment to make sure you and your guests have the most memorable time!

We can seat up to 500 people over two levels (or 700 on three), depending on the request. If the booking is a private show, we can also assist with the ticketing/guestlists. We also have a private bar for smaller events.

Past Clients include The BBC, Wandsworth Council, Café Nero, TedTalks, London Motor Film Awards, and more!

HIRE FEES to start from £2000+VAT
inclusive of primary staff and tech help (if required)

We also have layouts to suit social-distancing and Covid-19 compliance. Max 387 pax across three levels (287 pax across two).

Full tech information can be found on our website. For further enquiries regarding food and drink details, please contact us.

If you are interested in hiring The Grand for a private, streamed or corporate Event, please contact info@claphamgrand.com with as much information as possible and we will try our best to suit your needs!

We require a 50% deposit to secure any event booking, with the rest of the monies settled no later than 14 days before the event.





TECH & FURNITURE

FOH Console

Allen & Heath dLive S5000
Allen & Heath dLive CDM64
1 x Windows 10 computer for Spotify playback.

Amplification

4 x Martin Audio iK81 feeding: FOHL, FOHR, Subs, Fills
DJ Monitor Amp: 1 x Tannoy TA 1400
QSC QSYS Core510i processing.

Speakers

4 x Martin Audio W8LC Flown with 2 x W8LM underhung per side
10 x Axys Target centre hang enabling 3.1 cinematic presentations
6 x Martin Audio WS218X Subwoofer
Fills: Martin Audio speakers distributed around the venue giving even coverage to the under balcony and balcony areas

Monitoring

10 x M15 Bi-amp monitor powered by 2 x FFA 4004 and 2 x FFA 6004 Amps.
1 x Coda Audio active 18" Sub
4 x Martin XE300 (Passive Mode) powered by 1x Martin Audio iK81
1 x Yamaha M7CL48

Microphones and DI boxes:

6 x BSS ARI33 DI-BOX
4 x Shure SLX4 receivers
4 x Shure SLX2 wireless mics
1 x Shure Beta 52A
1 x Shure SM91
5 x Shure SM57
2 x Shure SM58
4 x Shure Beta 58
2 x Sennheiser E906
2 x AKG C3000
3 x Shure KSM137
5 x Shure Beta 98



TECH & FURNITURE

continued

Stands

8 x K&M Tall Boom Microphone Stand
8 x K&M Short Boom Microphone Stand
4 x Round Base Microphone Stand
DJ Equipment

At Tech Booth:

1 x Allen & Heath XONE 62
2 x Pioneer CDJ2000
Dj Booth:
1 x Pioneer DJM 900 NSX2
2 x Pioneer CDJ2000NXS2
Monitors: 2 x Martin Audio Blackline F12+
Available to use: 2 x Technic 1210 Mk2 Turntables (cartridges not included).

All venue sound apart from the DJ booth monitors goes through the Tech Booth desk which is located at the front of the circle.

Lighting Contol:

Chamsys MagicQ MQ100 Pro 2014 1.8.3.1 with a separate touchscreen monitor
SnakeSys B4 Ethernet to 4 DMX.
This desk controls all stage, decorative and architectural lighting.

FOR FULL LIST OF LIGHTS AND LAYOUT, PLEASE ASK FOR THE PRODUCTION BIBLE or TECH SPEC WITH YOUR ENQUIRY.

Furniture

Low Bronze Tables - 12
High Wooden Tables - 16
Stage Seating - 16
Sofas - 6
6-Seater Trestle Tables - 14
Thin 8-Seater Trestle Tables - 14
8-Seater Round Tables - 13
10-Seater Round Tables - 6
Long Benches - 28

Cushioned Folding Chair - 347
Uncushioned Folding Chair - 128
Backed High Chair - 65
Unbacked High Chair - 70
Low Gold Chair - 20
Booths for 2* - 32

*These are in the back half of the Circle and are not moveable.





FOOD & DRINK

We have three bars within the auditorium (one on each level) that are fit for whatever you're thirsty for!

With a range of bottled beer, wine, soft drinks, cocktails and bubbly, The Grand can offer group deals on purchases as well as packages for private events. Here is a sample of some of our offerings.

Please enquire via info@claphamgrand.com for a full menu and potential packages.

Wine from £20 per bottle

Chenin Blanc, Pinot Grigio, Sauvignon Blanc, Cabernet Sauvignon, Malbec and White Zinfandel.

Bottled Beer from £5

Camden Hells / IPA, Corona, Bud-Light, Goose IPA, Orchard Cider (non-alcoholic beer available)

Cocktails from £10

Fishbowls available from £25

Soft Drinks from £2

Bubbly from £30 per bottle

Da Luca Prosecco, Perrier-Jouët, Perrier-Jouët Rosé and Verve Cliquot.

Various group-drink deals are available!

*Prices, products and availability subject to change.

We also have our own in-house comfort food brand, Hot Beige! Meat, Veggie and Vegan options from nachos to hot dogs starting from £3!

Available for all shows.



As well as our in-house offerings, we also work closely with local businesses to offer a wide range of delicious meals for riders and private events. Subject to availability.

Please enquire further about our potential offerings.

External catering is also allowed.



All information and pricing is correct as of January 2021. All costs, products and services can be subject to change.
Please contact info@claphamgrand.com for any extra information.

THE CLAPHAM GRAND, 21-25 ST. JOHN'S HILL, LONDON. SW11 1TT.